

Empowered by Innovation

NEC



NEAX 2400 IPX

Internet Protocol eXchange

NEW
NETWORKING
NOW

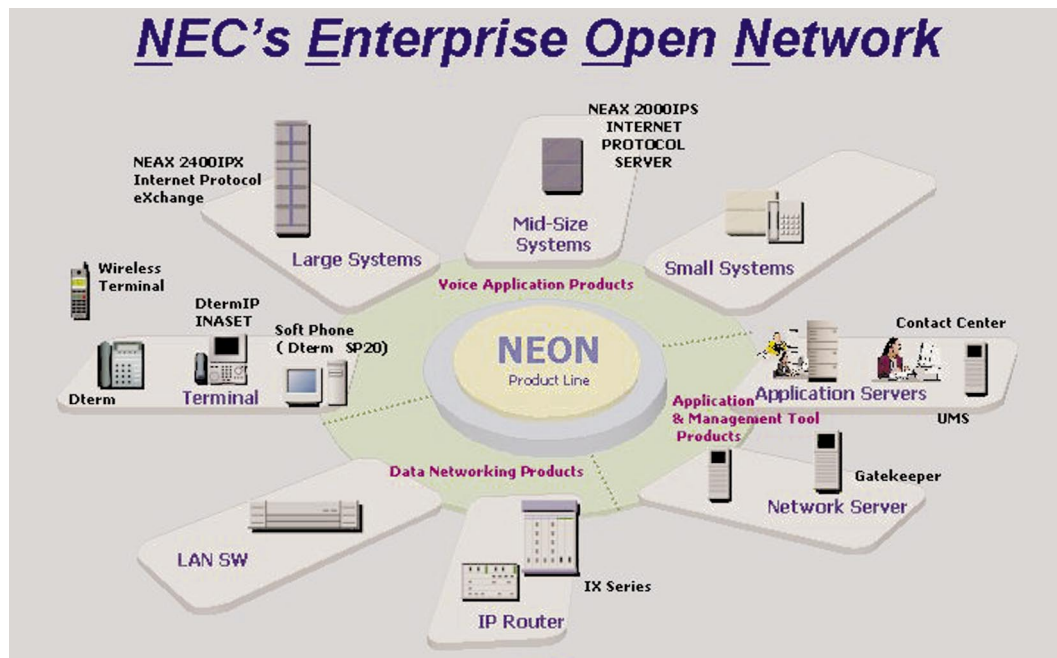
Open for Business

NEC's Enterprise Open Network

NEON embodies NEC's philosophy that drives development of complementary communication solutions for OPEN networks, delivering value-added capabilities and quality of service while also offering investment protection;

...providing

Communications Without Compromise.



NEC enables cost-effective migration to IP telephony

NEC's NEAX 2400 Internet Protocol eXchange (IPX), the newest member of the NEAX family, represents the fusion of existing NEC technologies with dynamic advances in hardware and software to satisfy the most stringent system requirements.

The NEAX2400 IPX's modular design, combined with the introduction of Internet Protocol (IP), results in virtually unparalleled expansion capability. The system also offers the full range of PBX features using Dterm Series digital terminals.

IP Migration

• Full IP-based Telephony System

System supports peer-to-peer connection not only between IP terminals within a LAN, but also across an IP network.

• Supports TDM Interface

Allows continued use of existing assets during migration to IP.

• Flexible System Configuration

Customer can employ any combination of TDM-based lines and IP-based lines they wish, and may add lines as they see fit.

• No Forklift Upgrade Necessary

NEAX2400 IPX enables gradual migration to IP while ensuring protection of investment in existing assets.



NEAX2400 IPX

What NEAX2400 IPX Can Do For Your Business

The NEAX2400 IPX provides a unique set of benefits to users seeking an advanced information system that is both highly flexible and highly reliable. Through the use of state-of-the-art computer-controlled telecommunications technology, the NEAX2400 IPX is able to offer a wide range of features.

Scalability: Current NEC customers can deploy IP capability with simple upgrades, and our fully IP-ready communications systems are ideal for new customers.

Fully Featured System: NEAX2400 IPX station users have access to more than 780 service features that enhance productivity, reduce costs and improve communication efficiency.

Flexible Line Size: The modular design of the NEAX2400 IPX enables the growth of the system in a cost-effective manner as your requirements demand.

Flexible Configuration: Customers can use the combination of TDM and IP lines that best suits their communications environment.

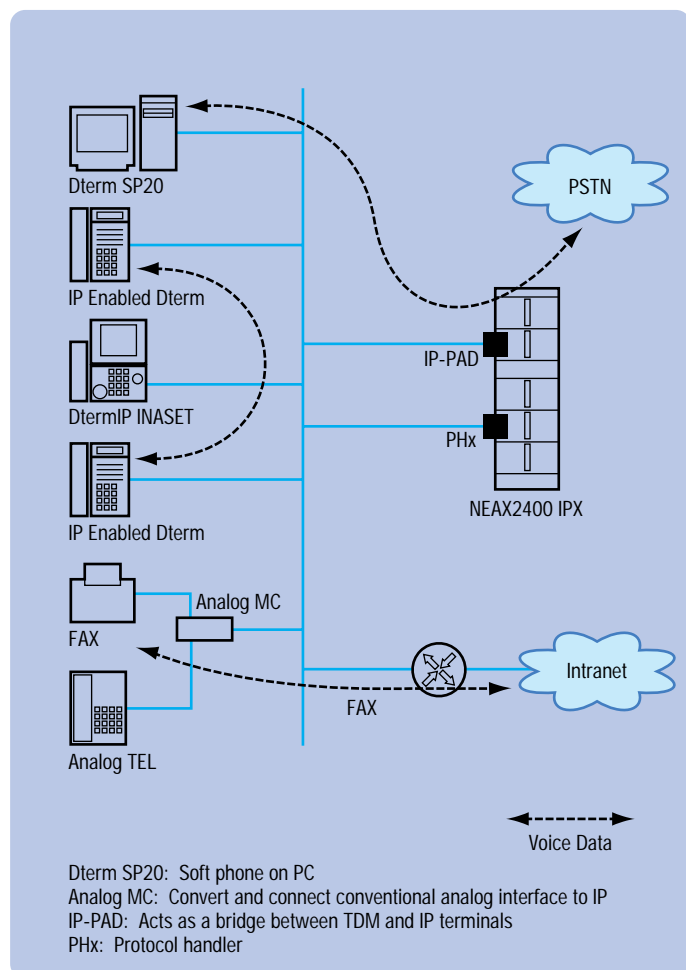
Flexible Numbering Plan: The use of a flexible numbering assignment meets all forms of IP network integration services.

Cost Controls: Features such as Least Cost Routing (LCR), Class of Service (COS) and Station Message Detail Recording (SMDR) allow you to control and even reduce costs.

Peer-to-Peer IP Connectivity

The NEAX2400 IPX can support IP switching (peer-to-peer), TDM switching, and IP/TDM switching. Peer-to-peer IP connectivity offers benefits such as:

- **High-quality VoIP communications with full telephony services**
- **Automatic Terminal Registration**
An IP terminal is automatically registered once it's connected to a LAN (DHCP support provided)
- **High reliability and security**
Proprietary operating system enhances operational reliability and security



NEAX2400 IPX System Overview

Networking Solutions That Work for Your Business

New answers for an ever-evolving business environment

Multi-service networking — the running of data, voice, video and other information over a common IP network — is the future of communications. NEC's IP Telephony solutions have been created in direct response to the growing demand for these capabilities.

NEAX2400 IPX Core Networking Features

Private Networking

- Fusion Call Control Signaling (FCCS) enables individual NEAX2400 IPX nodes dispersed within a network to operate as if each of them is part of a single integrated PBX system
- Common Channel Interoffice Signaling (CCIS) makes it possible for multi-site systems to work together as if they were a single system
- IP terminals at remote offices can operate as internal extensions connected to a WAN

Public Connectivity

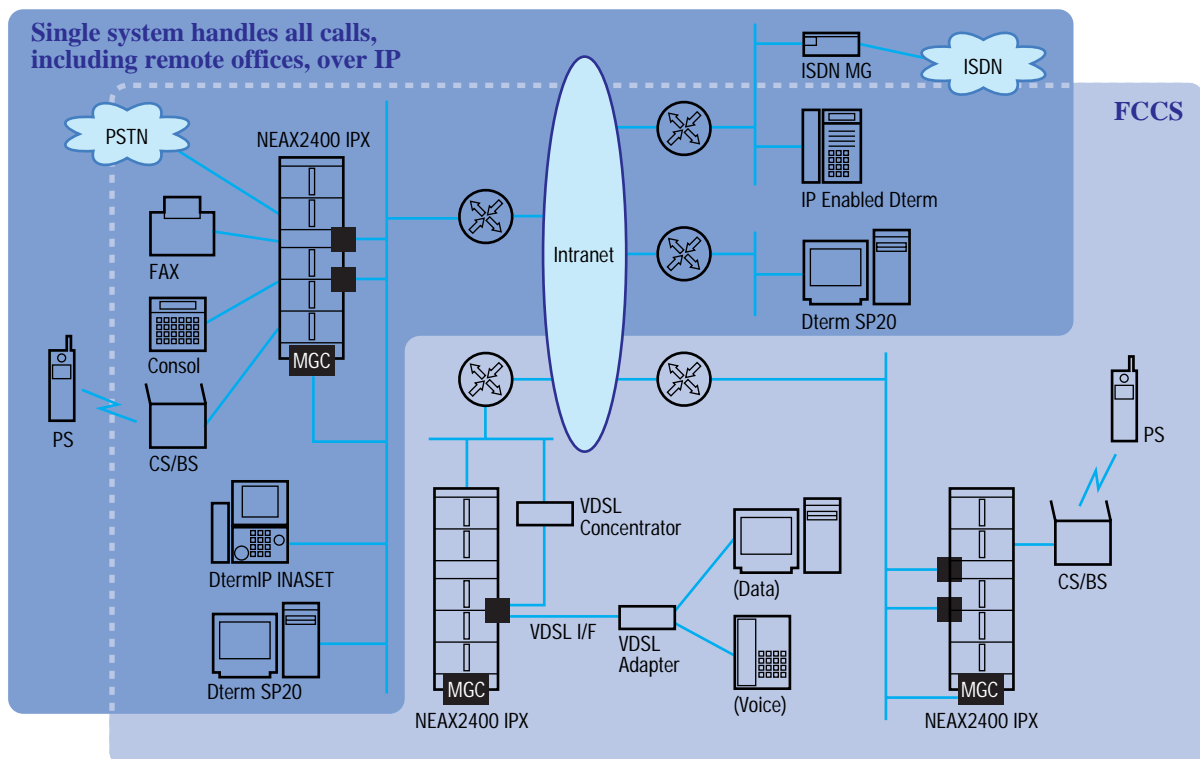
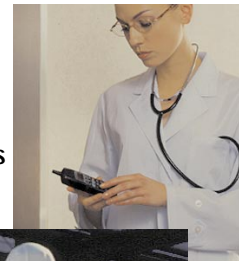
- Integrated Services Digital Network (ISDN)
- Q-SIG (Circuit-Switched Basic Call — ETSI Version)
- Digital Multi-Frequency Compelled Signaling R2 (MFC-R2)

NEAX2400 IPX's Wireless Communications System affords invaluable mobility, for enhanced productivity and efficiency

Mobilizing your work force has become amazingly simple. With personal handsets and a wireless communications system, employees can travel throughout a multi-storied building or across a large industrial complex and continue to stay in constant touch with customers and colleagues. NEC's NEAX2400 IPX features a built-in wireless communications system, which can support a maximum of 4,000 users in the Multi-IMG configuration.

Examples of Wireless Communications System Applications

- Business Offices
- Medical Centers/Hospitals
- Factories/Plants
- Department Stores
- Hotels



CTI Solutions for Office Applications

NEC's NEAX family of telecommunications systems offers rich functionality and valuable benefits to today's information-driven businesses. By providing an OAI (Open Application Interface) between external processors, such as mainframes and personal computers, with the internal processors of NEC's voice platforms, NEC brings control of telephony features and related call information right to the user's desktop.

PHS Location System*

The system enables you to confirm on a PC screen the location of a PHS terminal whose number has been registered as an extension. You can immediately verify the location of the terminal — even in a large building — by registering the terminal's extension number, greatly improving the efficiency of intra-office communications.

PHS Short Message Application*

You can display the same short message on a PHS LCD screen as appears on a pager.

Corus: Advanced Call-handling System

Ensuring your customers achieve a positive result every time they try to contact you is difficult in today's fast-paced business environment — yet your reputation depends on it!

Having an advanced call-handling system in place to ensure excellent internal and external call management is critical in meeting your customers' expectations.

Whether you are in a meeting, out of the office or away from your desk, your customers and co-workers need to be looked after.

With the best caller care in mind, Corus is an enterprise messaging application specifically designed to manage all your telephony communications in a single unified messaging environment.

Q-Master_{EX}: Flexible Contact Center Solution

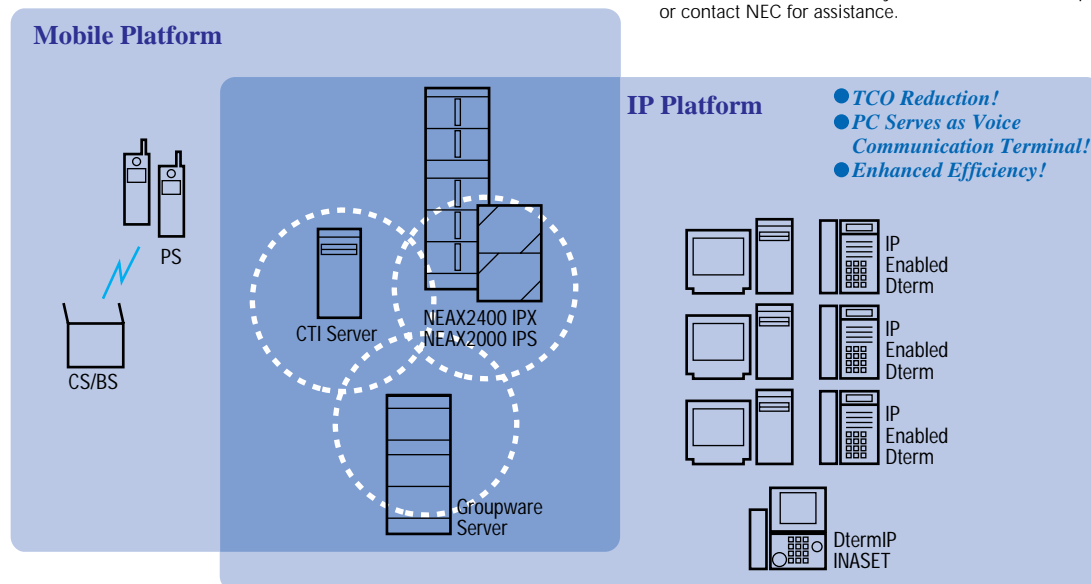
This application combines the high reliability of the NEAX2400 IPX with the power and flexibility of a LAN-based CTI architecture. Fully modular in design, Q-Master_{EX} allows Contact Center managers to select the components customers need to best meet their operational and budgetary objectives.

Automatic Call Distribution/Management Information System (ACD/MIS)

Through its Universal Call Distribution (UCD) capabilities or its basic ACD and MIS software, the NEAX2400 IPX can meet the simplest needs of the small-scale or new contact center or help desk. It also offers easy expansion and cost-effective performance. By loading ACD (Automatic Call Distribution) functions into a FCCS system, we can...

- ...Concentrate calls made to an agent into one network mode;
- ...Spread calls to agents across multiple nodes with one ACD;
- ...Achieve an improvement in call processing capability by establishing multiple ACDs in multiple nodes and dividing calls accordingly.

*Application software is required before these services can be used. You can create the necessary software, enlist the help of a vendor, or contact NEC for assistance.



Office Application Overview

Keep Your Network Running Smoothly

The NEAX2400 IPX's intelligent design greatly simplifies system operation, administration and maintenance

The NEAX2400 IPX is designed to facilitate network management of operation and maintenance functions, and to enable maintenance personnel to isolate and resolve problems rapidly — even for remote locations — maximizing system uptime.

Station Message Detail Record (SMDR)

The SMDR allows the NEAX2400 IPX to record detailed call information on all outgoing and incoming calls and route this information through an RS-232C/Ethernet interface. SMDR-Printout sends call information such as calling station number, dialed number, call start time/date and call duration to an asynchronous ASCII printer equipped with an RS-232C interface, on a per-call basis.

Maintenance

The NEAX2400 IPX's modular system design and sophisticated software diagnostics enable maintenance personnel to isolate and correct problems in a minimum amount of time. They can interface with the system using the Maintenance Administration Terminal (MAT) on-site and/or from a remote site to determine overall system status.

Maintenance Administration Terminal (MAT)

The MAT is a PC-based tool which provides support for NEAX2400 IPX system management, and is compatible with Windows98/NT/Me/2000-based PCs (Windows2000 recommended).

The following tasks can be performed via the MAT (password available):

- System/office data management (move, add, change)
- System/office data back-up (floppy disk)
- Traffic data display
- System message display

Web MAT: Dterm Assistant

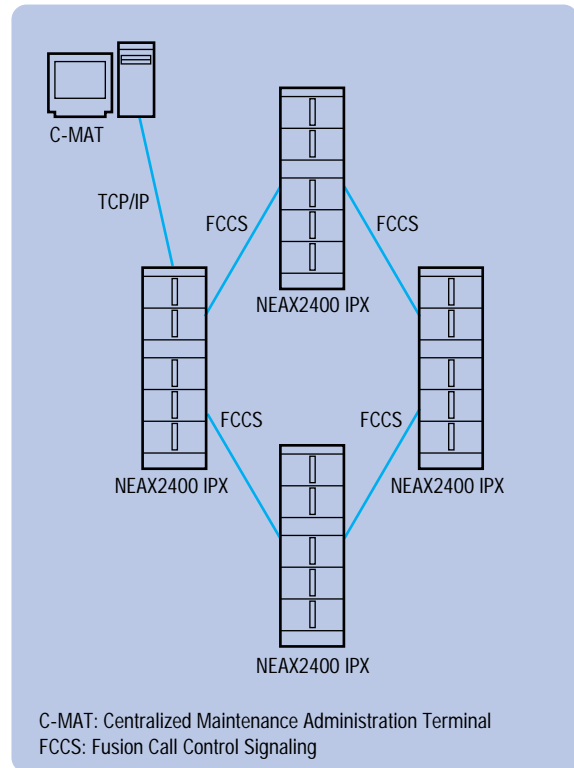
Web MAT is a Web browser-based maintenance tool which allows the user to easily change the extension number or reassign key functions.

Centralized Maintenance Administration Terminal (C-MAT)

The C-MAT is connected to one of the NEAX2400 IPX systems within an FCCS network. The C-MAT can access, and indicate the status of, all systems in the network on its display, and it can also perform the same functions handled by a standard MAT.

Remote Maintenance

All maintenance administration functions can be



accomplished by a remotely located MAT over a Public Switched Telephone Network (PSTN) on a dial-up or private-network basis. Tasks such as system diagnosis, automatic alarm reporting, fault detection and database reconfiguration can be performed from remote locations (ex. Maintenance Centers, Technical Assistance Service Centers).

Traffic Measurement

The NEAX2400 IPX provides sophisticated traffic management reports to be used for overall analysis of system performance. The MAT functions as a man-machine interface, and is used to request and display report type, measurement time period, and amount of time between reports.

System Diagnostics

The NEAX2400 IPX diagnostic software constantly monitors the operating system and automatically generates supervision and fault information on overall system performance to the MAT and related supporting hardware. The maintenance management system interacts with the System Processors, switching network interface section and various other sections — including Power, Fuse and Temperature — and reports fault indications.

Turn your Desktop Into a Communication Station

DtermIP INASET

The DtermIP INASET incorporates a large-size LCD, with Web access and phone book features built-in. It essentially supports all of the functions of traditional Dterm Series terminals (home, browser and directory applications).



Intelligent Dterm Soft Phone (Dterm SP20)

The Dterm SP20 uses a Windows-based Graphical User Interface (GUI), enabling you to enjoy multi-functional digital telephone operation via your own personal computer. Simply connecting a USB handset/headset to your PC leads to enhanced communications efficiency and increased productivity.



Dterm SP20 Sample On-Screen Display

Dterm75 Series terminals bring the powerful features of the NEAX2400 IPX right to your computer

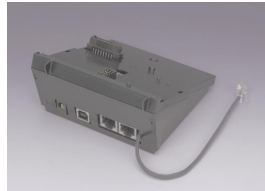
Dterm75 Series multi-function/multi-line digital terminals are ergonomically designed, featuring larger keypad buttons for dialing convenience, an expanded three-line x 24-character LCD display, tiltable legs with non-skid feet, and a highly visible call/message indicator lamp. Hands-free capability is standard with all models. Dterm75 Series terminals are easily connected to the NEAX2400 IPX by a single cable. These advantages make Dterm75 Series terminals the right choice to meet your business communication requirements.



Dterm75 (32D)
32 programmable keys
(White)

IP Adapter (IPW)

This new IP adapter for peer-to-peer connectivity supports TagVLAN and can be connected to PCs in a cascade configuration without adversely affecting tone quality.



There are four models available:

- Dterm 8 (White/Black): 8-button terminal
- Dterm 8D (White/Black): 8-button terminal with LCD display
- Dterm 16D (White/Black): 16-button terminal with LCD display
- Dterm 32D (White/Black): 32-button terminal with LCD display

Media Converter (2-port Analog MC)

The Media Converter provides a path for migration of analog telephone and G3 FAX services to IP. It is equipped with an RJ-45 jack for connection to a LAN, and performs a protocol conversion between the analog line and IP.



Power Patch Panel for IP Terminal

The Power Patch Panel is equipped with 12 10BASE-TX/100BASE-TX ports, over which Ethernet data and DC power at -48V can travel up to 100 meters (using standard Category 5 cable). This unit eliminates the need for the individual AC outlets on the IP telephone, as well as Uninterruptable Power Supply (UPS) and AC/DC adapters.



Attendant Consoles

Dterm75 Attendant Terminal (White/Black)

The flexible Attendant Terminal makes use of the DSS/BLF (Direct Station Selection/Busy Lamp Field) Console, and offers important functions such as a 60-key pad, extension status indicator lamp and one-touch calling.



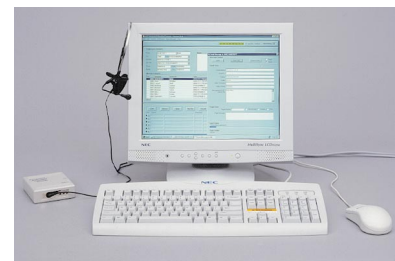
Desk Console

With a design that, while compact, is rich in functionality, the Desk Console is a strong response to a growing need for parallel processing capability in everyday business.



PC-based Operator Console

The Integrated Attendant Console (IAC), designed for compatibility with the NEAX PABX family, is a WindowsNT-based operator console that provides the capability to operate as an Attendant Console and a Directory System.



Visit our website at <http://www.neaxnet.com>

ND-91675(E)
Printed in Japan

Empowered by Innovation

NEC